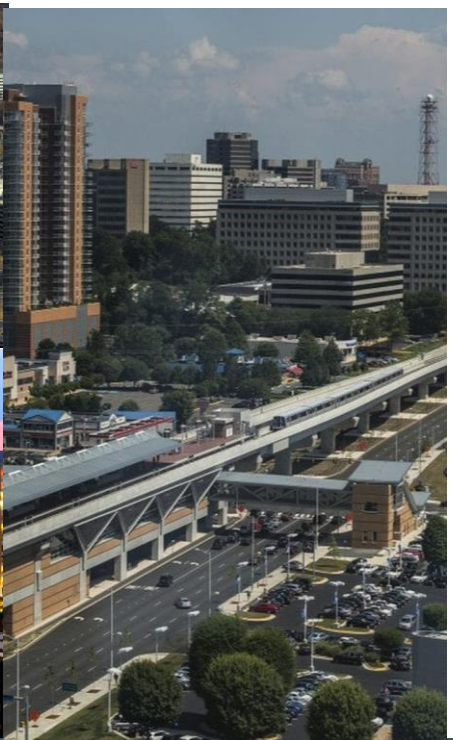
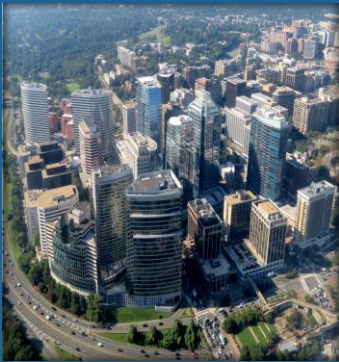


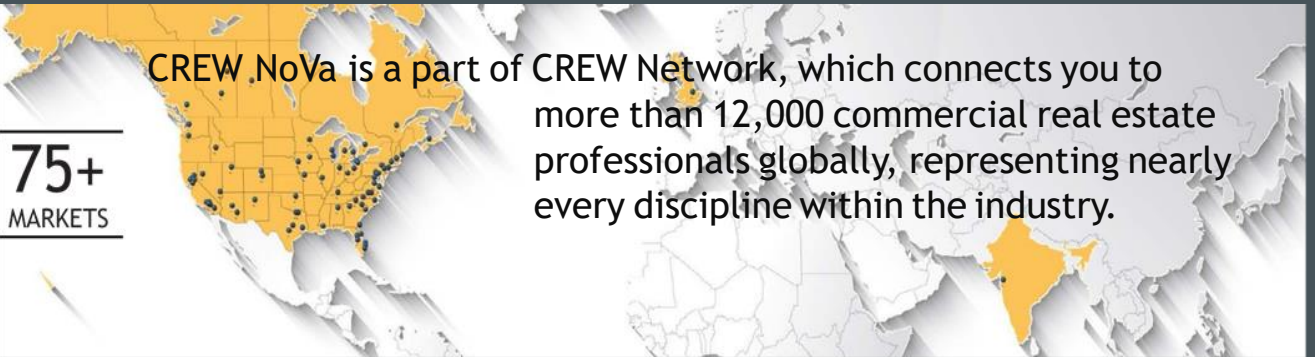
CREW



NORTHERN VIRGINIA



SPONSORSHIP
OPPORTUNITIES
2021



CREW.NoVa is a part of CREW Network, which connects you to more than 12,000 commercial real estate professionals globally, representing nearly every discipline within the industry.

75+
MARKETS

WHY SPONSOR?

CONNECTIONS WITH SENIOR-LEVEL DECISION MAKERS FROM EVERY FACET OF THE CRE INDUSTRY
ACCESS IN INDUSTRY RESEARCH THAT INFORMS BEST PRACTICES
GLOBAL EXPOSURE FOR YOUR BRAND AND BUSINESS
YEAR-ROUND EXPOSURE TO 12,000 CRE PROFESSIONALS GLOBALLY IN MORE THAN 75 MARKETS

EXPOSURE TO ALL CRE DISCIPLINES



Your Support Advances Women in CRE

Your Sponsorship Rewards in a Snapshot

	Diamond \$7,000	Platinum \$5,000	Gold \$3,550	Silver \$1,900	Bronze \$1,000
SPEAKING OPPORTUNITY at one CREW NoVA program to share Sponsor's offerings and services - Limit 5 minutes (advance notice required)	•	•			
COMPANY SPOTLIGHT: opportunity to have company representatives at exhibit table at CREW NoVA program	2	1			
COMPANY COLLATERAL: Placed at each place setting at one (1) CREW NoVA program (<i>sponsor provided</i>)	•	•			
RESERVED SEATING at speaker's table at one CREW NoVA Program (limited to 2 attendees) advance notice required	3	1			
COMPANY HIGHLIGHT SIDE: Featuring sponsor Ad (provided by sponsor) that loops before and after CREW NoVA programs (at least 4 times per year)	•	•	•		
COMPANY EXPOSURE: Your company announced by presenter; logo on table tent cards; logo on PPT loop; and name tag with sponsor ribbon	•	•	•	•	•
QUARTERLY KUDOS on CREW NoVA Facebook and Twitter	•	•	•		
HOTLINK from CREW NoVA website to sponsor home page	•	•	•	•	
COMPANY LOGO prominently displayed on CREW NoVA website	•	•	•	•	•
COMPANY RECOGNITION on weekly flyer	•	•	•	•	•
COMPLIMENTARY REGISTRATION to <i>Annual Professional Development Program</i> (Half off cost of annual program for one member only)	•				
ANNUAL MARKET FORECAST program passes (valued at \$100 each)	4	2			
ANNUAL AWARDS PROGRAM event passes (valued at \$200 each)	2				
ANNUAL MEMBERSHIPS (valued at up to \$425) OR Complimentary 2021 CREW Network Convention Member Registration Fee (\$1,800 value)	4 or 2	2 or 1			
OPPORTUNITY to host Members-Only Networking event	•				
ANNUAL MEMBERSHIP (valued at up to \$425)			•		
PROGRAM PASSES to be used by employees, and/or to bring a guest or client (applies to CREW NoVA Chapter programs only) (valued at up to \$95 each)	12	10	8	6	2
COMPANY LOGO featured in annual advertisement in Washington Business Journal to thank our Chapter Sponsors	•	•	•	•	•

Your Support Advances Women in Real Estate

SPONSORSHIP OPPORTUNITIES

Recognition at Events:

- Speaking Opportunity
- Company spotlight
- Reserved seating (3 Events)
- Annual Market Forecast (4 passes)
- Company Highlighted at Every Event
- Half Price for PD Program of the Year for one member
- 4 Annual Memberships and/or 2 CREW Conference Passes (\$1,800 value)
- Annual Awards Program (2 passes)
- 12 Event Passes

On-Line Exposure:

- CNCC Recognition
- Quarterly Social Media Spotlights: CREW NoVA LinkedIn, Facebook and Twitter
- Hotlink from website to sponsor home page
- Corporate Logo prominently featured on CREW NoVA Website
- Weekly Flyer recognition

Diamond
\$7,000

Recognition at Events:

- Speaking Opportunity
- Company spotlight
- Reserved seating (1 Event)
- Annual Market Forecast (2 passes)
- Company Highlighted at Every Event
- 2 Annual Memberships or 1 Crew Conference Pass (\$950 value)
- 10 Event Passes

On-Line Exposure:

- Quarterly Social Media Spotlights: CREW NoVA LinkedIn, Facebook and Twitter
- Hotlink from website to sponsor home page
- Corporate Logo prominently featured on CREW NoVA Website
- Weekly Flyer recognition

Platinum
\$5,000

Your Support Advances Women in Real Estate

SPONSORSHIP OPPORTUNITIES

Recognition at Events:

- Company Highlighted at Every Event
- 1 Annual Membership (\$425 value)
- 8 Event Passes

On-Line Exposure:

- Quarterly Social Media Spotlights: CREW NoVA LinkedIn, Facebook and Twitter
- Hotlink from website to sponsor home page
- Corporate Logo prominently featured on CREW NoVA Website
- Weekly Flyer recognition

Gold
\$3550

Recognition at Events:

- Company Highlighted at Every Event
- 6 Event Passes

On-Line Exposure:

- Hotlink from website to sponsor home page
- Corporate Logo prominently featured on CREW NoVA Website
- Weekly Flyer recognition

Silver
\$1,900

Recognition at Events:

- Company Highlighted at
- 2 Event Passes

On-Line Exposure:

- Corporate Logo prominently featured on CREW NoVA Website
- Weekly Flyer recognition

Bronze
\$1,000

WASHINGTON BUSINESS JOURNAL

ANNUAL
FULL-PAGE AD
IN THE
WASHINGTON
BUSINESS
JOURNAL





YOUR COMPANY BELONGS HERE

Initiatives for Sponsoring

By becoming a sponsor of CREW NoVA you join many of the region's most prominent companies who recognize that as the face of commercial real estate changes, it's important that we create an industry where men and women have an equal chance to succeed. Sponsoring CREW NoVA opens the door to new business and referrals; local and nationwide connections; and gives you the opportunity to showcase your services and products. Plus, sponsorship positions your company as a leader in diversity and the advancement of women in commercial real estate.

- **Visibility:** Your firm will be promoted in variety of media, including program flyers, our website, and program presentations, to name a few
- **Year-round exposure:** Access to more than 1,000 commercial real estate professionals in the region
- **Connections to decision makers:** Meet and reach a full spectrum of the industry—investors, architects, developers, lenders, attorneys, and more
- **Access to industry research and white papers:** CREW Network produces reliable statistics addressing the advancement of women in commercial real estate
- **Loyalty:** 72 percent of CREW members have given a referral to another member in the last 12 months • **A leader in diversity:** Your sponsorship supports chapter leadership training, strategic planning, professional development opportunities, and the advancement of women in commercial real estate